



**TECNOSERVICE'21 srl**

by Tinti Sergio  
Via Carlo Pisacane, 134  
61032 Fano (PU) Italy  
P.IVA IT0200411413

Tel. +39 0721 805911  
FAX +39 0721 809794  
e-mail: [staff@technochef.it](mailto:staff@technochef.it)  
[www.technochef.it](http://www.technochef.it)  
[www.technochef.eu](http://www.technochef.eu)

Services and Technologies for professional catering since 1973



CODE	DESCRIPTION	PRICE/DELIVERY
<b>TCF375-000500</b>	Professional 2-door refrigerator cabinet, temp. -2°/+8 C°, capacity 1400 litres, ecological version with ENERGY SAVING, CLASS B - Stainless steel 304, ventilated, V.230/1, Kw.0.63, dim. mm.1480x815x2085h.	

**PROFESSIONAL DESCRIPTION**

**2-door REFRIGERATOR CABINET, ECOLOGICAL ENERGY SAVING version - CLASS B, HIGH THICK cabinet, 1400 liter capacity, operating temperature -2°/+8° C :**

- **external/internal** in **AISI 304 stainless steel**,
- **ventilated refrigeration** ,
- **insulation thickness 75 mm** ,
- rounded internal **corners** ,
- adjustable stainless steel feet,
- **reversible door** with 105° stop,
- **full-height profiled door handle in stainless steel** ,
- replaceable magnetic seal,
- Door **lock** with key,
- **3 pairs of stainless steel guides** and **3 GN2/1 Rilsan grids** per door,
- **evaporator treated by cataphoresis** ,
- **stainless steel evaporator cover** , removable
- totally replaceable refrigerant system, running on ecological **natural R290 gas** , which ensures **energy savings reaching peaks of 80%** compared to similar products... not very virtuous,
- **automatic defrost**,
- automatic condensation evaporation,
- **electronic thermostat** ,

**Electronic control unit** with:

- keyboard protection cover,
- high temperature alarm,
- open door alarm,
- maximum temperature storage.

**OPTIONAL ACCESSORIES**

- Interior lighting
- Kit of 4 swivel wheels (2 with brakes), diameter 128 mm
- Door opening kit with pedal

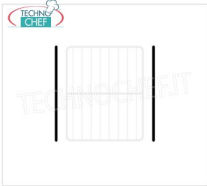
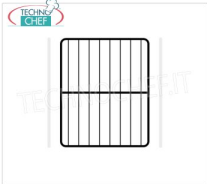
**CE mark**

**Made in Italy**

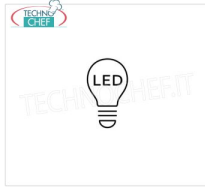
**TECHNICAL CARD**

<b>power supply</b>	Monofase
<b>Volts</b>	V 230/1
<b>frequency (Hz)</b>	50
<b>motor power capacity (Kw)</b>	0,63
<b>net weight (Kg)</b>	205
<b>gross weight (Kg)</b>	240
<b>breadth (mm)</b>	1480
<b>depth (mm)</b>	815
<b>height (mm)</b>	2085

**TECHNICAL CARD**

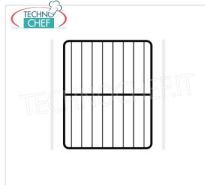
CODE/PICTURES	DESCRIPTION	PRICE/DELIVERY
<p><b>TCF375-000504</b></p> 	<p><b>Couple of type C guides</b> Pair of guides type C 605 mm for 2/1 GN grids (650x530 mm)</p>	
<p><b>TCF375-000506</b></p> 	<p><b>GN 2/1 plastic coated grid</b> GN 2/1 plasticized grid (mm 650x530)</p>	

**TCF375-000503**



**Led lighting**  
1 door led lighting

**TCF375-000505**



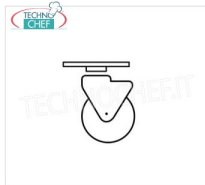
**GN2 / 1 stainless steel grid**  
GN 2/1 stainless steel grid (650x530 mm)

**TCF375-000501**



**Door opening kit with pedal**  
Door opening kit with pedal

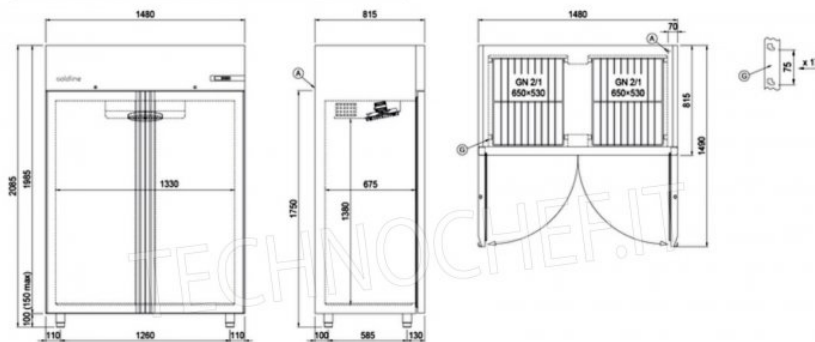
**TCF375-000502**



**Kit of 4 pivoting stainless steel wheels with brake**  
Kit of 4 pivoting stainless steel wheels with brake, h 128 mm.



Disegno tecnico



A: Uscita cavo alimentazione

D: Diffusore flusso aria

G: Cremagliere



**ENERG** Y IIA  
енергия · ενεργεια  
IE IA

A+++  
A++  
A+  
A  
B  
C  
D  
E  
F  
G

**B**

ENERGIA · ЕНЕРГИЯ · ΕΝΕΡΓΕΙΑ  
ENERGIA · ENERGY · ENERGIE  
ENERGI

**659**  
kWh/annum

**900** L

- L

**5**  
40°C-40%

2015/1094-IV

TECHNOCHEF.IT