



PROFESSIONAL DESCRIPTION

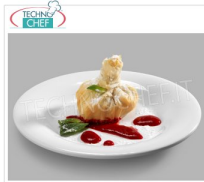
EXTRA-STRONG WHITE MELAMINE FLAT PLATE, COMPLETE RANGE with diameter from 160 mm to 265 mm :

- melamine is a synthetic resin that hardens and takes shape after a heating process;
- it is a material recommended and used for Table and Buffet services;
- suitable for contact with food SGS certification;
- operating temperature from 20 ° C to + 70 ° C;
- heat-resistant to corrosion, it is non-toxic, odorless, light and non-deformable, conducts little heat;
- not recommended for use in microwave, oven, over direct heat, oils and chemicals.

CE mark

AVAILABLE MODELS

KR-MP22111



Technochef - FLAT PLATE with EXTRA STRONG MELAMINE PLATE Ø 160 mm, MP22111

Flat plate with rim in extra-strong white melamine, diameter 160 mm.

€ 2,96

VAT excluded
Shipping to be calculated

Delivery from 4 to 9 days

KR-MP22112



Technochef - FLAT PLATE with FLAP in EXTRA STRONG MELAMINE Ø 200 mm, Mod.MP22112

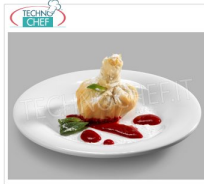
Flat plate with rim in extra-strong white melamine, diameter 200 mm.

€ 4,52

VAT excluded
Shipping to be calculated

Delivery from 4 to 9 days

KR-MP22113



Technochef - FLAT PLATE with FLAP in EXTRA STRONG MELAMINE Ø 235 mm, Mod.MP22113

Flat plate with rim in extra-strong white melamine, diameter 235 mm.

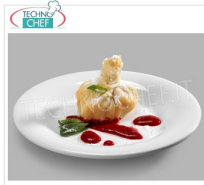
€ 5,56

VAT excluded

Shipping to be calculated

Delivery from 4 to 9 days

KR-MP22114



Technochef - FLAT PLATE with FLAP in EXTRA STRONG MELAMINE Ø 265 mm, Mod.MP22114

Flat plate with rim in extra-strong white melamine, diameter 265 mm.

€ 6,40

VAT excluded

Shipping to be calculated

Delivery from 4 to 9 days