



TECNOSERVICE'21 srl

by Tinti Sergio
Via Carlo Pisacane, 134
61032 Fano (PU) Italy
P.IVA IT0200411413

Tel. +39 0721 805911
FAX +39 0721 809794
e-mail: staff@technochef.it
www.technochef.it
www.technochef.eu

Services and Technologies for professional catering since 1973



CODE	DESCRIPTION	PRICE/DELIVERY
SI-MARTE20	Planetary mixer with lt.20 stainless steel tank, IP 67 stainless steel controls, inverter system, rpm 120-400, V.230 / 1, Kw.1.5, Weight 130 Kg, dim.mm.576x748x1189h	€ 3.017,14 <i>VAT excluded</i> Shipping to be calculated Delivery from 8 to 15 days

PROFESSIONAL DESCRIPTION

PLANETARY MIXER with STAINLESS STEEL lt.20, equipped with INVERTER SYSTEM :

- **powerful , robust and flexible** thanks to the **progressive speed control managed by an inverter ;**
- **machine suitable for the heaviest jobs** and ideal for all those who want something more;
- **dedicated to the world of confectionery, it** is the ideal tool for those who want a performing, reliable machine, without compromises on which they can always count;
- **the inverter system** allows a **precise regulation of the number of revolutions** and can adapt to any processing, be it with a whisk, spatula or hook;
- **solid structure in enamelled carpentry ;**
- **IP 6 stainless steel buttons ;**
- **Timer 0-30 minutes** and ∞;
- **Rpm 120-400** (revolutions per minute);
- **3 easily replaceable machining accessories : trowel and hook** in aluminum casting / **whisk** in aluminum and steel casting.

CE marking

TECHNICAL CARD

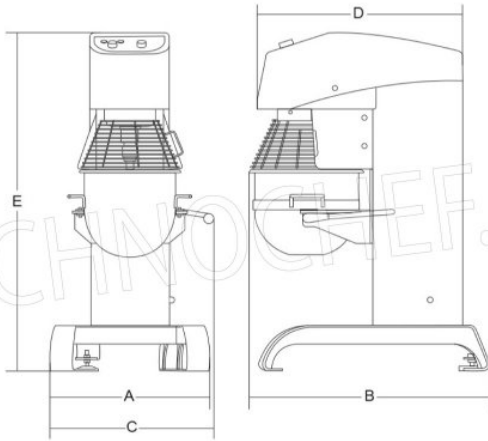
frequency (Hz)	50
motor power capacity (Kw)	1,5
net weight (Kg)	130
breadth (mm)	576
depth (mm)	748
height (mm)	1189







Comandi inox IP 67
Stainless steel IP 67 protected controls



TECHNO CHEF.IT



	Watt	ph	r.p.m.	lit	A	B	C	D	E	kg	mm	kg
Marto 20	1500	1ph	120 - 400	20	564	748	576	638	1189	130	-	-