

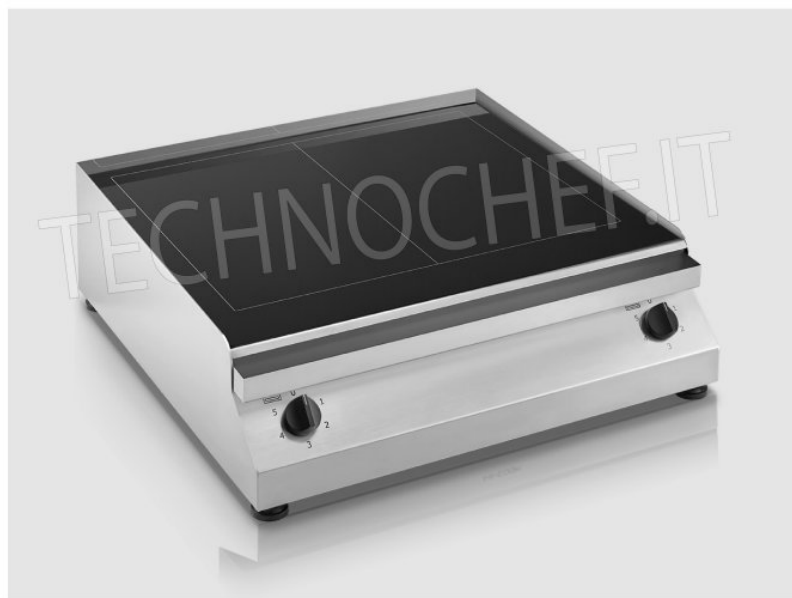


TECNOSERVICE'21 srl

by Tinti Sergio
Via Carlo Pisacane, 134
61032 Fano (PU) Italy
P.IVA IT0200411413

Tel. +39 0721 805911
FAX +39 0721 809794
e-mail: staff@technochef.it
www.technochef.it
www.technochef.eu

Services and Technologies for professional catering since 1973



| CODE | DESCRIPTION | PRICE/DELIVERY |
|--------------------|--|--|
| HC.PFT.A.G2 | GLASS CERAMIC HOB/FRY TOP, ELECTRIC table top, 2 INDEPENDENT COOKING ZONES of 2.5+2.5 kW, ADJUSTABLE TEMPERATURE from 50° to 400°C, V 230/1, 2.5+2.5 kW , dimensions 640x670x200h mm | € 574,94 <i>VAT excluded</i> Shipping to be calculated Delivery from 4 to 9 days |

PROFESSIONAL DESCRIPTION

ELECTRIC, table-top GLASS-CERAMIC GRIDDLE :

- Sealed stainless steel structure to prevent infiltration;
- Glass ceramic cooking surface;
- Highly reliable radiant system;
- 2 independent glass-ceramic cooking zones of 2.5 kW each;
- 10 seconds to reach incandescence;
- Adjustable temperature from 50° - 400° C;
- Heating system controlled by energy regulator;
- Operation light under the glass-ceramic surface;
- Two complementary cooking systems: contact and infrared;
- Excellent grilling without added fat;
- Homogeneous thermal distribution favored by the characteristics of the glass and resistance;
- High energy efficiency guaranteed by the particular thermal insulation of the resistance;
- Patented grease collection system;
- Quick and easy cleaning;
- Number of circuits: 2;
- Adjustment knobs: 2;
- Regulation system: Energy regulator;
- Heating system: Radiation;
- Dimensions mm 640x670x200h;
- Cooking area size: 510x450 mm;
- Glass dimensions: 643x535 mm;
- Feet height: 15-30 mm.

MADE IN ITALY

TECHNICAL CARD**power supply** Monofase**Volts** V 230/1**frequency (Hz)** 50**motor power capacity (Kw)** 5,00**net weight (Kg)** 14**breadth (mm)** 640**depth (mm)** 670**height (mm)** 200